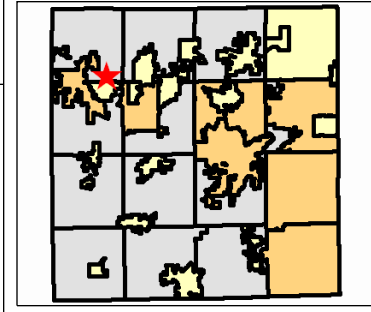
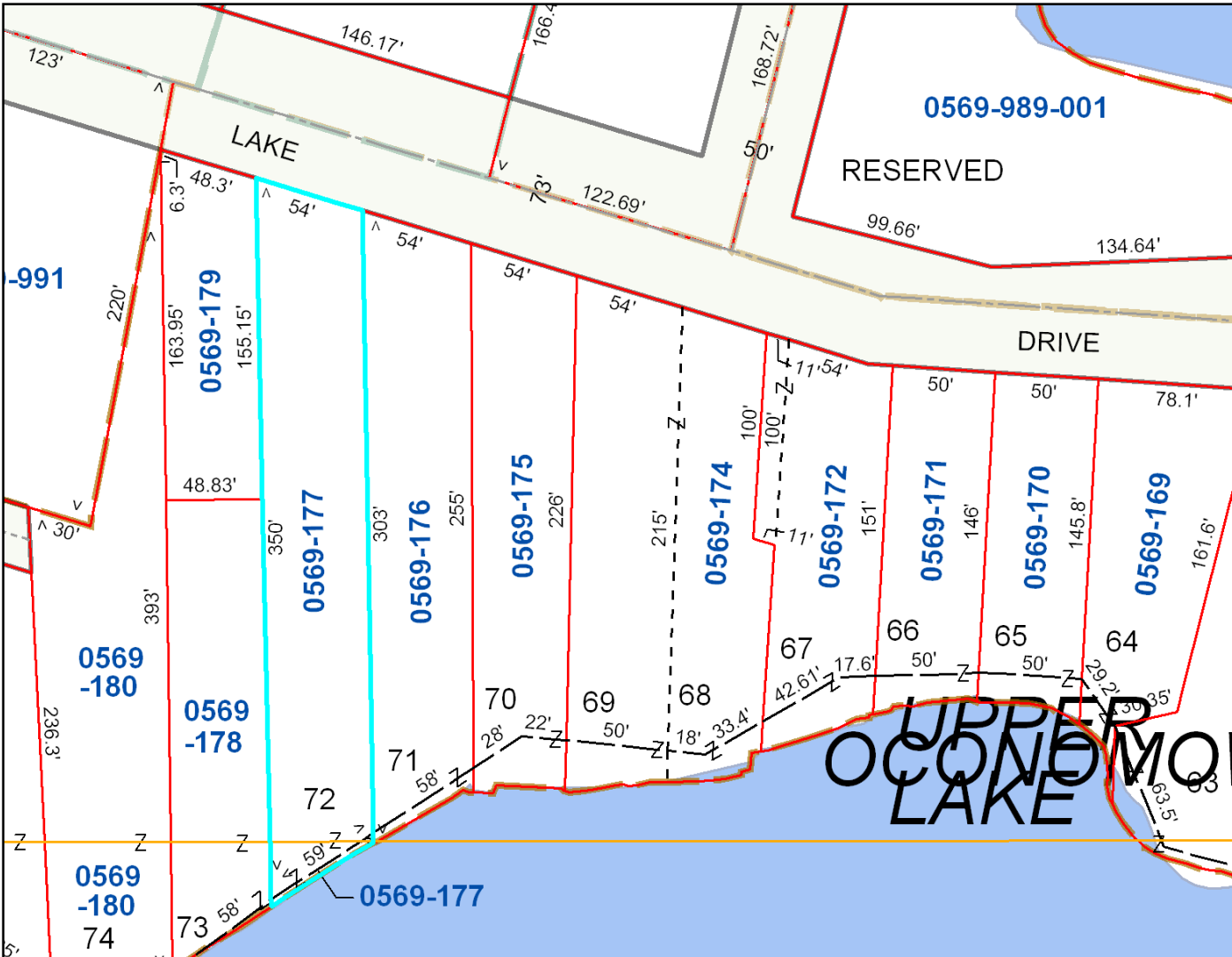




N52 W35329 Lake Dr.



Legend

- Points of Interest**
- ✈ Airport
 - ⚰ Cemetery
 - 🚒 Fire Station
 - 🏛 Government Building
 - 🏥 Hospital
 - 📖 Library
 - 🏠 Post Office
 - 🏞 Park or Recreation
 - 🎓 School
 - 🌐 Unincorporated Place
 - 🌳 County Parks
 - 🚓 Police Station
 - 🚔 Sheriff Substation
 - 🗺 Civil Division Boundaries
 - 🗺 Surrounding Counties
 - 📏 PLSS Section Lines
 - 📏 PLSS Quarter Section Lines
- Cartographic Elements**
- Type**
- Easement Line (Major)
 - Dimension arrow
 - Extended Tie Line
 - Identification Arrow
 - ~ Meander Line
 - ~ Note Leader
 - ~ Parcel Line (Water)
 - ~ Targeting Tc
 - ~ Tie Hook
 - Tie Line
 - ROW Centerline
 - RR ROW Centerline
 - ROW Radius
 - Sub Block 100
 - Sub Block 200
 - ▭ Parcels
 - ▭ Shared Interest Parcels
- Road Rights of Way**
- ROW Type**
- ▭ Dedicated
 - ▭ Proposed
 - ▭ Reserved
 - ▭ Routed
 - ▭ Assessor Plat
 - ▭ Condo Plat
 - ▭ GDM
 - ▭ Subdivision Plat
- Railroad Rights of Way**
- RR ROW Status**
- ▭ Active
 - ▭ Noted
- 🌊 Lakes and Rivers
 🌊 Streams and Creeks



The information and depictions found on this site are for informational purposes only and Waukesha County specifically disclaims accuracy in this reproduction and specifically admonishes and advises that if specific and precise accuracy is required, the same should be determined by procurement of certified maps, surveys, plats, Flood Insurance Studies, or other official means. Waukesha County will not be responsible for any damages which result from third party use of the information and depictions herein or for use which ignores this warning.